

Subdivision of District Lot 4847, Lillooet

Plan EPPXXXXX

District, except plans 7650, 7661, 7898, 7899, 8669,
10009, 10101, 10129, 13207, 13304, 13757, 14010, 15966,
15967, 18594, 21040, 21558, 22913, 24141, 29279, 33851,
KAP56644 and H123.

(pursuant to Section 67, Land Title Act)

BCGS 92P.064

Scale 1:500



All distances are horizontal ground distances
in metres and decimals thereof.

Datum: NAD 83 (CSRS) 2002.0
UTM Zone 10
N. 5721559.594
E. 617194.457
Point combined factor: 0.999617
Estimated horizontal positional
accuracy: 0.06m

Datum: NAD 83 (CSRS) 2002.0
UTM Zone 10
N. 5721455.641
E. 617345.812
Point combined factor: 0.999617
Estimated horizontal positional
accuracy: 0.05m

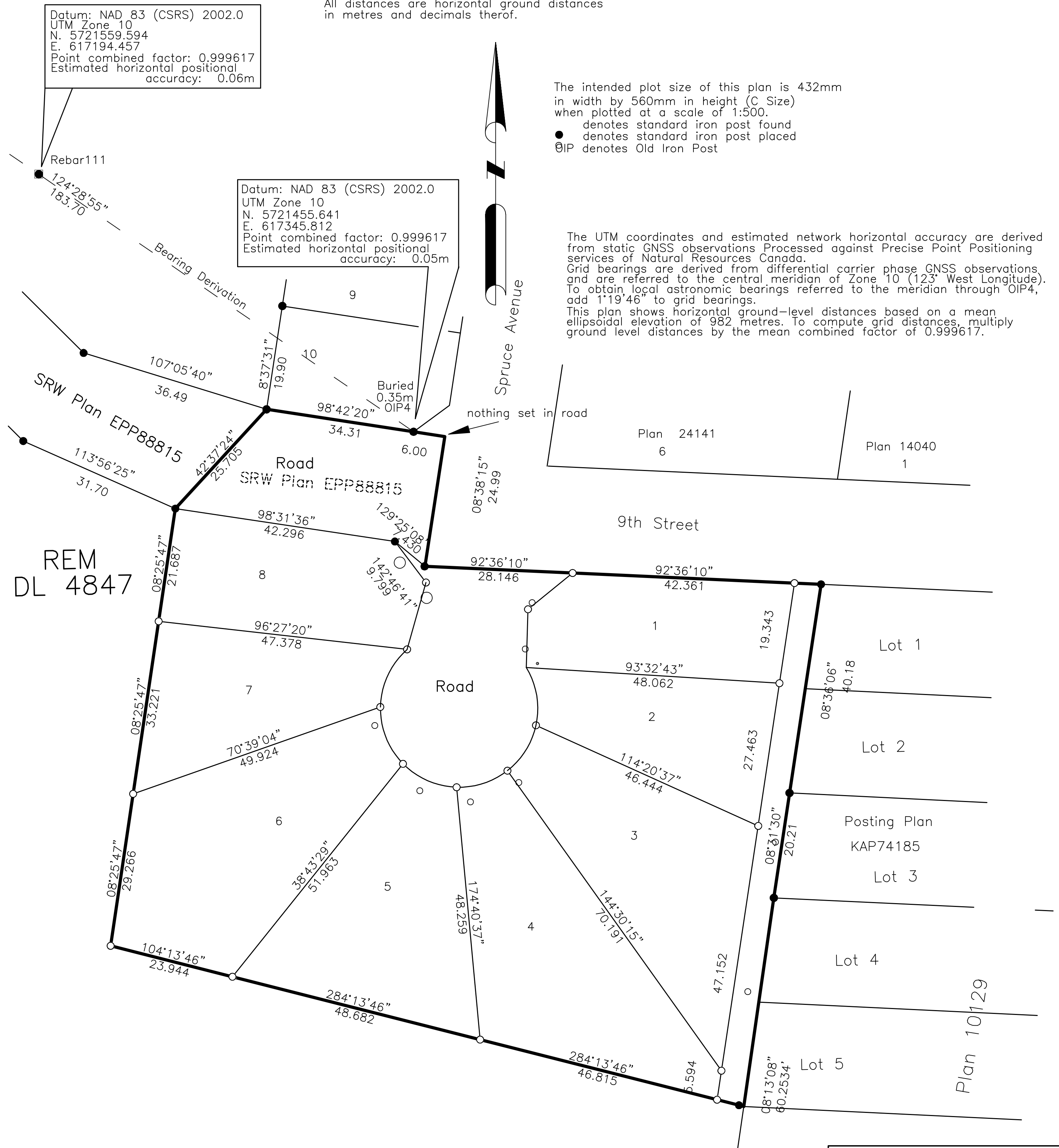
The intended plot size of this plan is 432mm
in width by 560mm in height (C Size)
when plotted at a scale of 1:500.

- denotes standard iron post found
- denotes standard iron post placed
- ⊙IP denotes Old Iron Post

The UTM coordinates and estimated network horizontal accuracy are derived
from static GNSS observations Processed against Precise Point Positioning
services of Natural Resources Canada.

Grid bearings are derived from differential carrier phase GNSS observations,
and are referred to the central meridian of Zone 10 (123° West Longitude).
To obtain local astronomic bearings referred to the meridian through OIP4,
add 1°19'46" to grid bearings.

This plan shows horizontal ground-level distances based on a mean
ellipsoidal elevation of 982 metres. To compute grid distances, multiply
ground level distances by the mean combined factor of 0.999617.



REM
DL 4847

The field survey represented by this plan was completed
by Michael Kidston, BCLS on the XXth day of January, 2019.

This plan lies within the Cariboo Regional District.

This plan lies within the jurisdiction of the Approving Officer
for the District of 100 Mile House.
Subdivision Application No.

Michael Kidston
B.C. and Canada Land Surveyor
100 Mile House, B.C.
250-395-6025 mklis@bcinternet.net
File: 1227
Dwg: MK-1227-SUB1